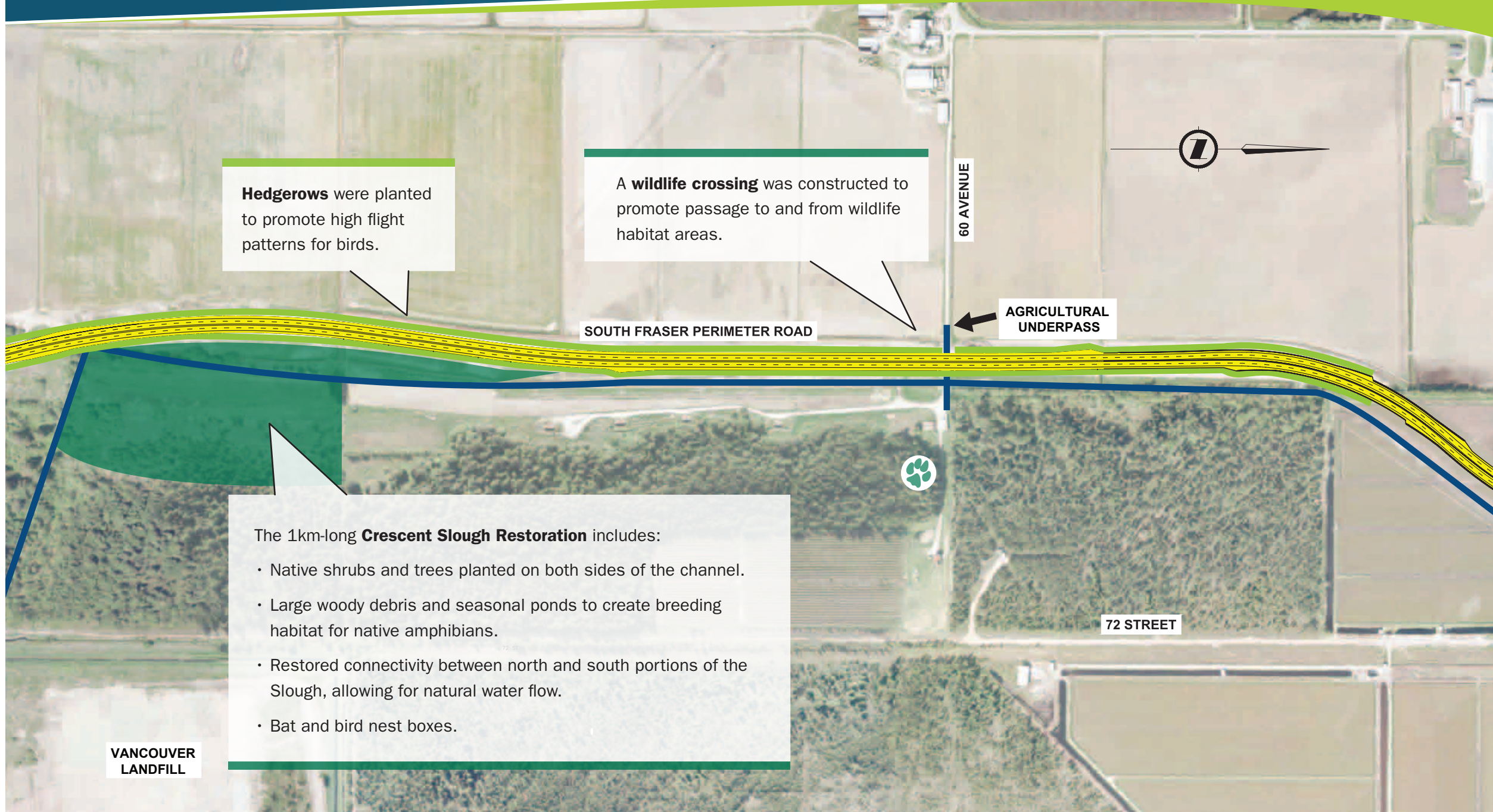


# SOUTH FRASER PERIMETER ROAD PROJECT



**Hedgerows** were planted to promote high flight patterns for birds.

A **wildlife crossing** was constructed to promote passage to and from wildlife habitat areas.

The 1km-long **Crescent Slough Restoration** includes:

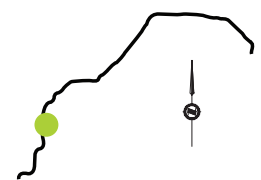
- Native shrubs and trees planted on both sides of the channel.
- Large woody debris and seasonal ponds to create breeding habitat for native amphibians.
- Restored connectivity between north and south portions of the Slough, allowing for natural water flow.
- Bat and bird nest boxes.

VANCOUVER LANDFILL

SFPR and Ramps
  Landscaping
  Agricultural Enhancement
  Environmental Enhancement
  Wildlife Crossing

## Project Benefits

- SFPR provides convenient and reliable access between the Golden Ears Bridge, Port Mann Bridge, Pattullo Bridge, Alex Fraser Bridge and George Massey Tunnel, to help efficiently reroute traffic in the event of a significant incident as well as to provide improved emergency response.
- Safer communities – less trucks and commuter traffic on local streets, particularly on River Road in North Delta and Highway 17 through Ladner.
- 90% less truck traffic on River Road in North Delta.
- 80% less total traffic on River Road in North Delta.
- Port and ferry traffic significantly reduced on Highway 17 through Ladner as through-traffic uses the new SFPR.



**SOUTH FRASER PERIMETER ROAD (SFPR)**  
HIGHWAY 99 - 72<sup>ND</sup> STREET

**SECTION 6**